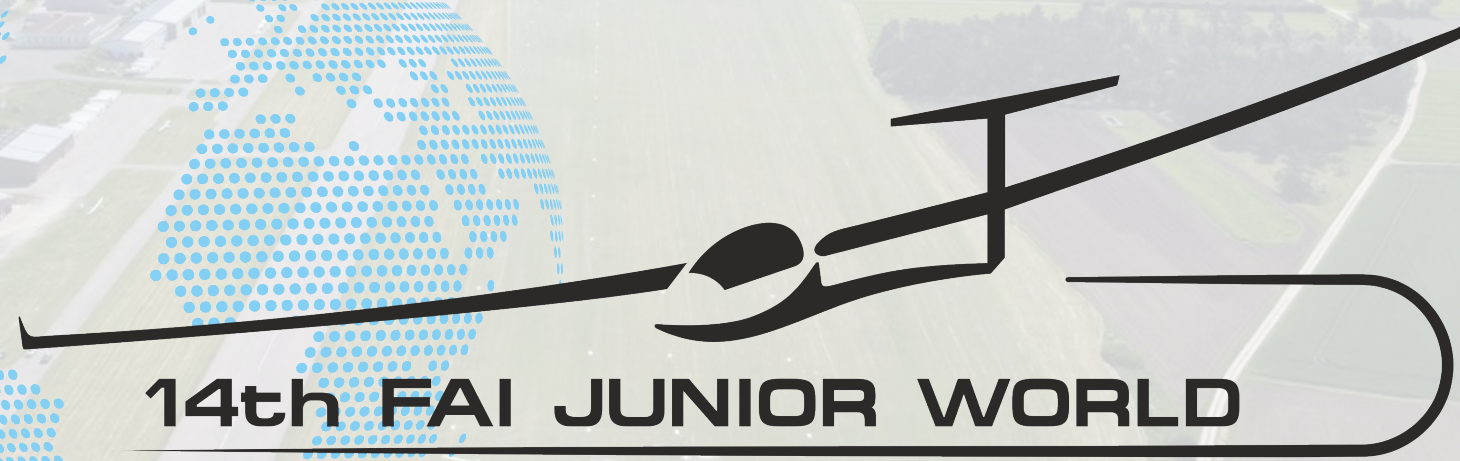




Selfbriefing



14th FAI JUNIOR WORLD
GLIDING CHAMPIONSHIPS
2026



Contents



1. General Information
2. JWGC Radio Frequencies
3. Procedure for Unofficial and Official Training
4. Daily Procedure during the Competition
 - Schedule
 - Weighing and Gridding
 - Launch and Starting Procedures
 - Landing Procedure
5. Contest Site Boundaries
6. Airspace Requirements

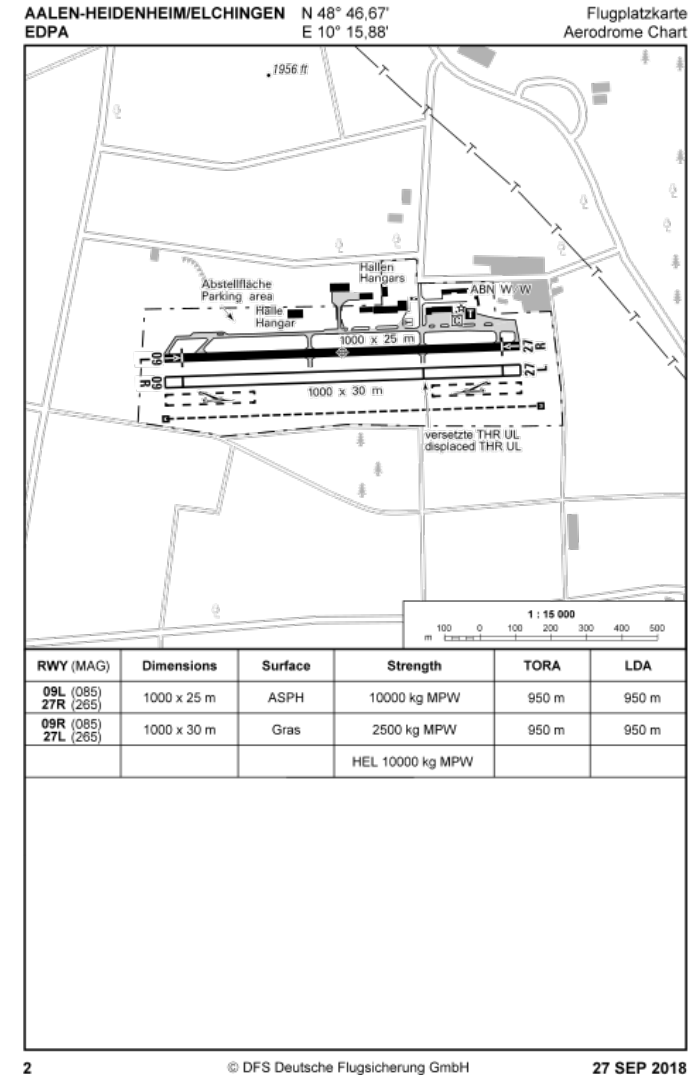
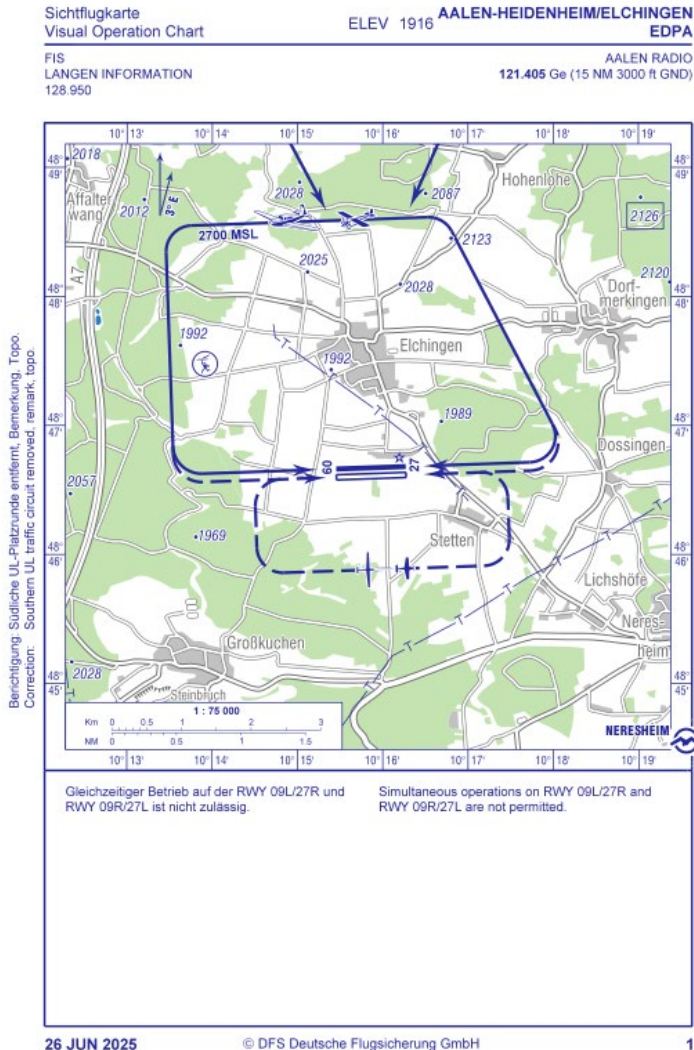


Contents



- 1. General Information**
2. JWGC Radio Frequencies
3. Procedure for Unofficial and Official Training
4. Daily Procedure during the Competition
 - Schedule
 - Weighing and Gridding
 - Launch and Starting Procedures
 - Landing Procedure
5. Contest Site Boundaries
6. Airspace Requirements

Aalen-Elchingen (EDPA)



First Entry into the Airfield and Registration

- You will receive the following information upon registration:
 - Allocation of your camping and trailer parking spot
 - RFID-chips for cashless payment of food and beverages
- First-time entry and initial registration takes place at the briefing hall (see next slide).
 - This area is a one-way street, accessible **only from July 25th to July 29th, 2026.**
- Vehicle access to the airfield is permitted only via the blue gate east of the "Flying Museum" (see next slide, code: 1013)
- You may only exit the airfield via the blue gate
 - Drive up to the magnetic loop, gate opens automatically
- **Speed limit: 20 km/h throughout the airport area**
- Entering the airfield by car via the campsite is **strictly prohibited!**



Trailer Parking Area



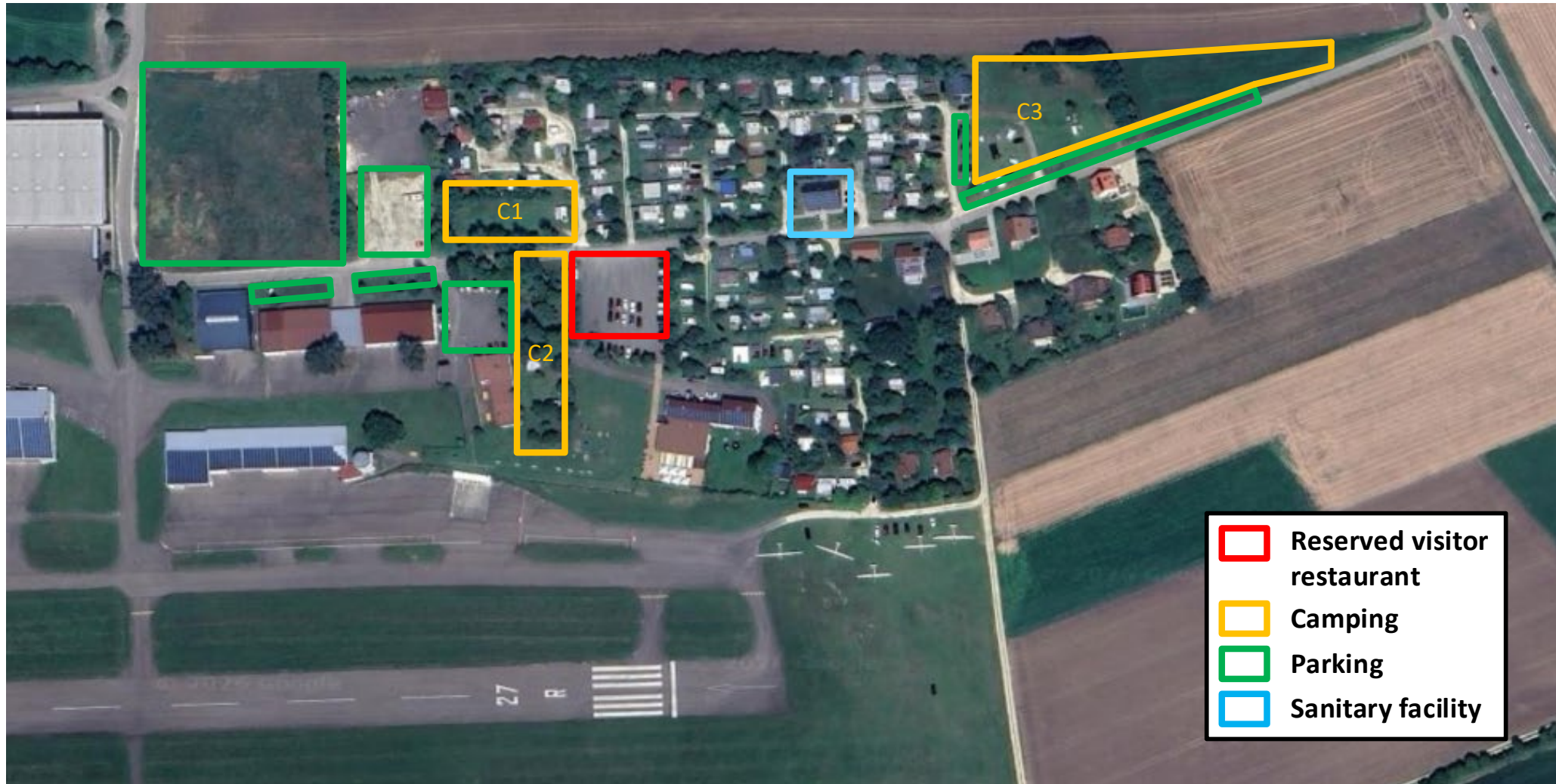
- Trailer parking is located north of the paved runway at the western end of the airfield (both sides of hangar 5).
- Use the taxiway, but keep your eyes open for planes taxiing.
- **Speed limit: 20 km/h throughout the airport area**
- Each team's designated parking area is marked their National Flag and boundary lines.
- **Do not occupy the taxiway area with your rigged gliders which are parked in your dedicated area (indicated by a red line on the next slide)**
- Please park your trailer directly along the south side of the gravel road.
- See next slide for a detailed layout.

Trailer Parking Area



Country	Glider	Field	Country	Glider	Field
Germany	7	1	Great Britain	4	11
France	6	2	Slovenia	2	11
Czech	6	3	Austria	1	12
Netherlands	6	4	Argentina	1	12
Poland	5	5	South Africa	4	12
Finland	5	6	Schweden	2	13
Hungary	5	7	USA	4	13
Switzerland	6	8	Lithuania	1	14
Denmark	5	9	Slovakia	3	14
Norway	1	9	Brazil	2	Hangar 5
Belgium	4	10			
Australia	2	10			

Campsite and Parking Areas





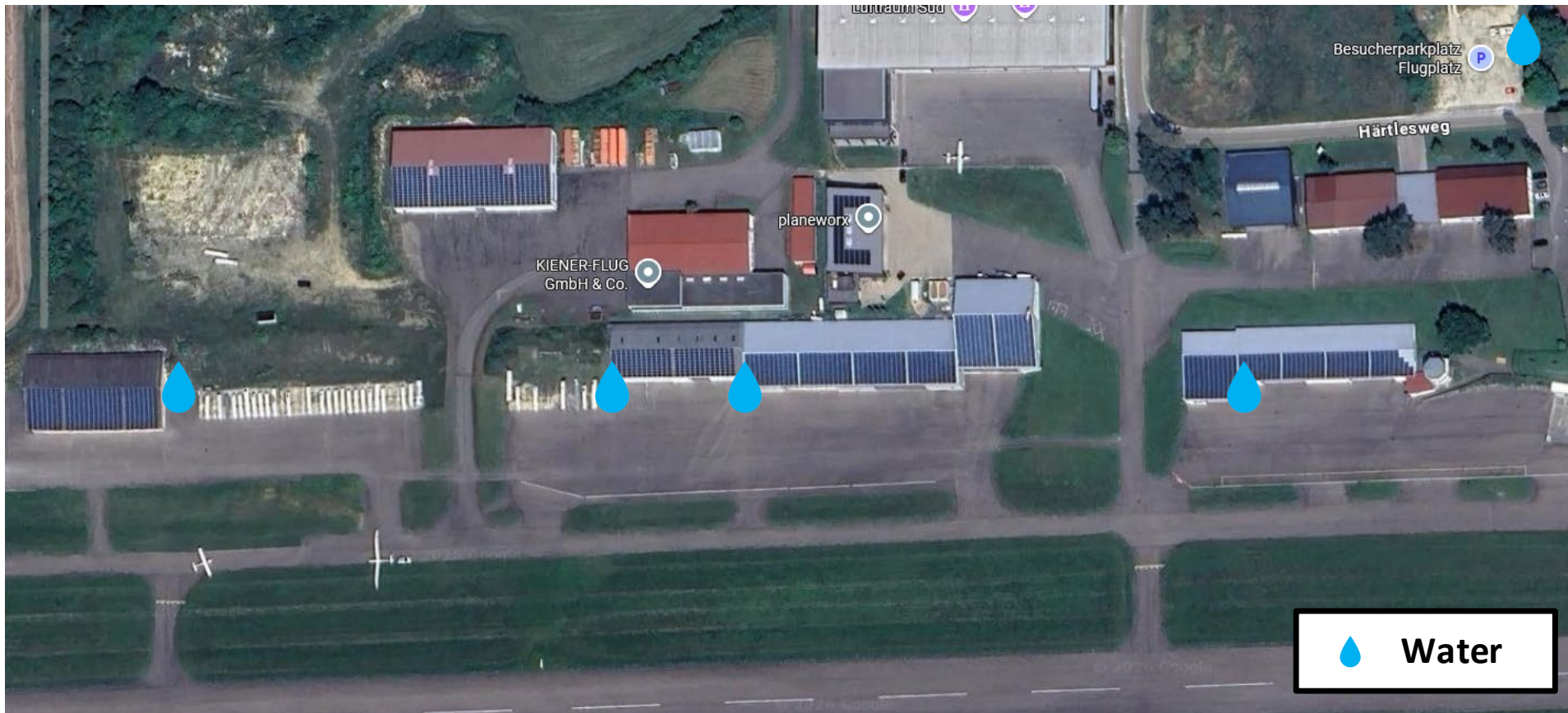
Usage of the Campsite and Restroom Facilities



- Open fires are strictly prohibited, including during BBQs. Gas and coal grills must be attended at all times.
- Quiet hours begin at 10:00 p.m. Please respect the pilots' need for rest; loud music and disruptive noise are not permitted
- The briefing hangar is the designated meeting point for social events in the evening.
- Use only appropriate outdoor-rated cables, plugs, and connectors. Please be mindful of the total electrical load to prevent circuit overloads.
- Keep the camping area and hangars clean. Please dispose of all waste in the provided bins.
- Do not leave food in the open to avoid attracting wildlife.
- To minimize waiting times, please organize shower usage according to the competition schedule (Proposal: pilots first, followed by crews after launch.)
- Please keep all restrooms and shower facilities clean for everyone.

Water Tapping

- Please, take all necessarily needed water canisters with you for filling up your glider.
- **Direct refueling of gliders from the water tapping points by hoses is not permitted!**





Scrutineering, Waypoint Files, Airspace File



- Please book appointments via this [link](#)
- [Waypoints](#)
- [Airspace Germany](#)
- [Boundary of Germany](#)

- Catering is offered in the briefing hangar by the local aeroclub's youth group.
- Catering starts at August 2nd.
- Cashless payment is possible with the chips provided during registration (all expenses will be added to your final competition invoice)
- **Breakfast offer** from 7:30 a.m.
 - Breakfast buffet available
 - Fresh bread delivery service from the local bakery (Starts at August 1st)
- **Coffee, cakes and snacks** are available throughout the day.
- **Daily dinner service** by airfield restaurant envisaged
- Procedure for pre-ordering breakfast and dinner will be published separately
- Drinks are available until 10:30 p.m. (longer on special occasions)

1. General Information
- 2. JWGC Radio Frequencies**
3. Procedure for Unofficial and Official Training
4. Daily Procedure during the Competition
 - Schedule
 - Weighing and Gridding
 - Launch and Starting Procedures
 - Landing Procedure
5. Boundaries of the Competition Area
6. Airspace Requirements



JWGC Radio Frequencies



Airfield frequency „AALEN RADIO“	Towing, Finish	121.405 MHz
Competition frequency „AALEN COMPETITION“	Startline, Safety	128.890 MHz

The frequencies assigned to the different National Teams will be communicated to the Team Captains after the approval of the authorities.



Contents

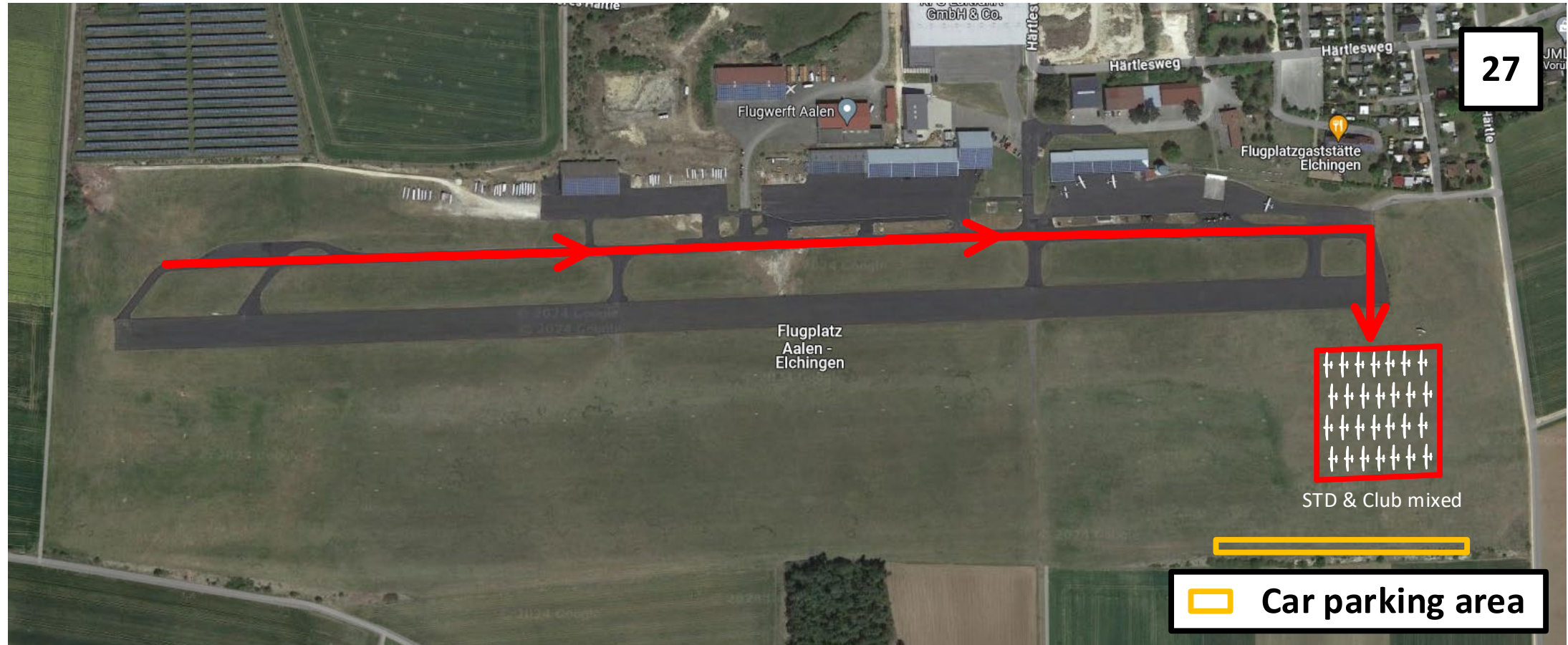


1. General Information
2. JWGC Radio Frequencies
- 3. Procedure for Unofficial and Official Training**
4. Daily Procedure during the Competition
 - Schedule
 - Weighing and Gridding
 - Launch and Starting Procedures
 - Landing Procedure
5. Contest Site Boundaries
6. Airspace Requirements

- Official registration must be finished completely before first flight. Please note that no launches will be permitted without prior registration.
- **Unofficial training (July 25th – July 29th 2026):**
 - **Free gridding** in four launch rows for both classes (see next slides)
 - Tow ropes are provided by the club
 - A grid marshal will be on-site to provide guidance
- **Official Training (July 30th – August 1st 2026):**
 - Grid information: Distributed via WhatsApp between 7:00 a.m. and 7:45 a.m.
 - **Free gridding** in four launch rows between 08:00 a.m. and 09:30 a.m. (see next slides)
 - Each participant has to use his own towing rope
 - If necessary, grid compression will take place at 9:30 a.m.
 - A grid marshal will be on-site to provide guidance
 - Briefing: Begins at 10:00 a.m. in Hangar 1

Any changes will be communicated via WhatsApp, all times mentioned are local times (UTC + 2)!

Gridding during Unofficial Training – Operation Direction 27



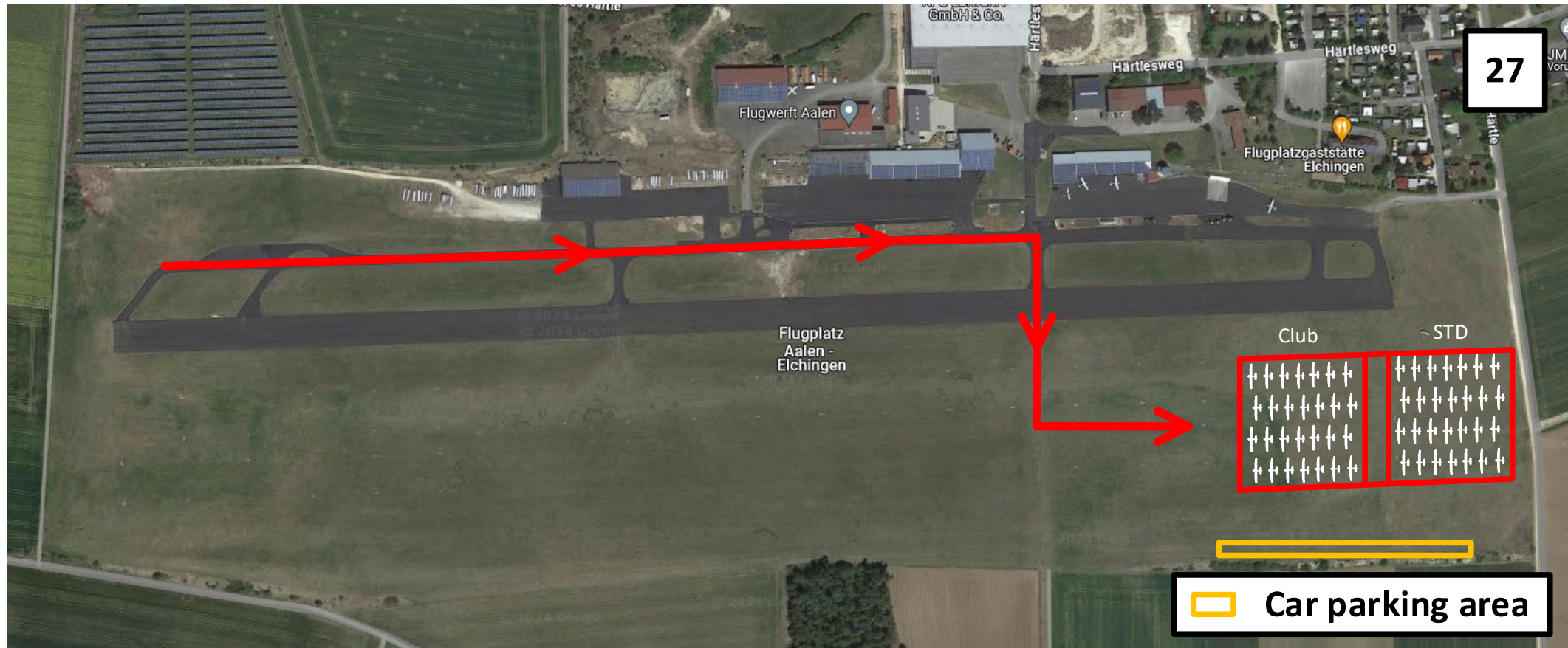
It is mandatory to listen to 121.405 MHz about the traffic on the runway. You can cross the runway only if there is no traffic inbound or outbound. WATCH OUT !

Gridding during Unofficial Training – Operation Direction 09



It is mandatory to listen to 121.405 MHz about the traffic on the runway. You can cross the runway only if there is no traffic inbound or outbound. WATCH OUT !

Gridding during Official Training – Operation Direction 27



It is mandatory to listen to 121.405 MHz about the traffic on the runway. You can cross the runway only if there is no traffic inbound or outbound. WATCH OUT !



It is mandatory to listen to 121.405 MHz about the traffic on the runway. You can cross the runway only if there is no traffic inbound or outbound. WATCH OUT !



Contents



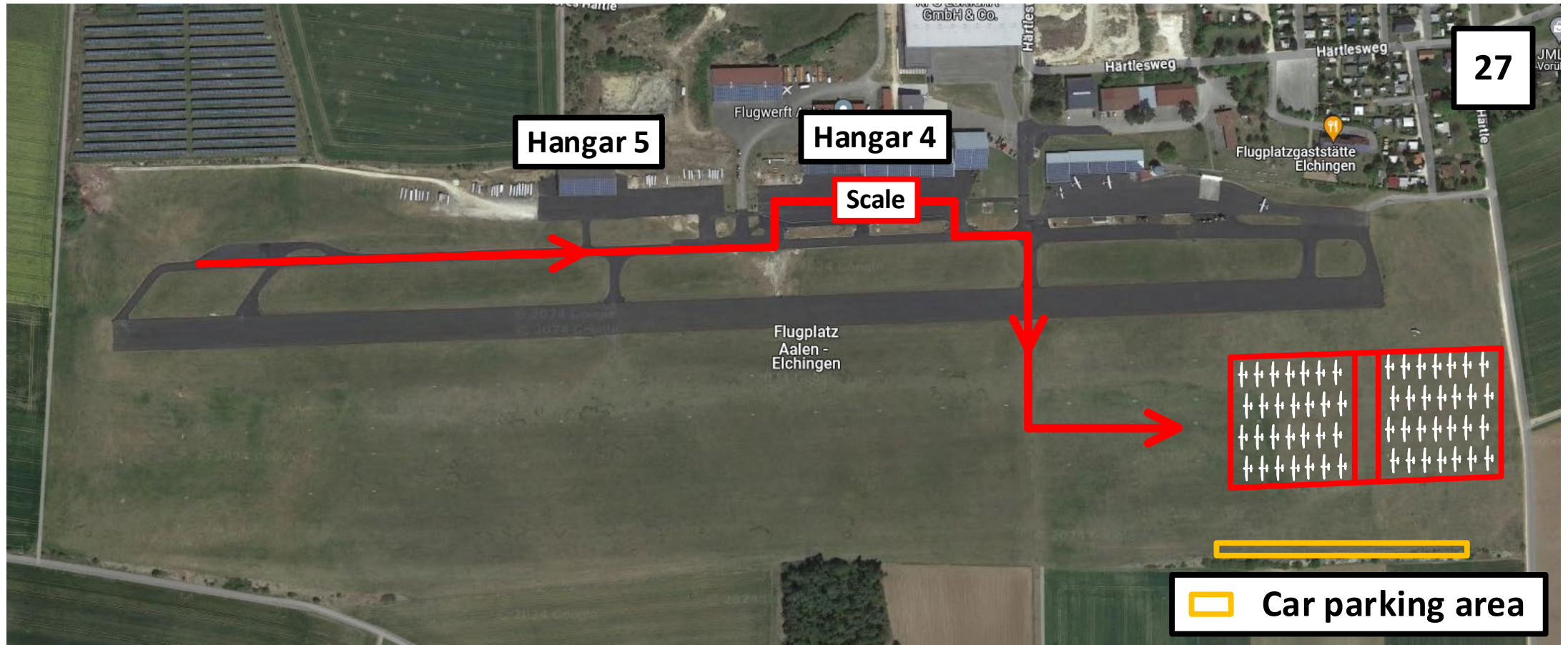
1. General Information
2. JWGC Radio Frequencies
3. Procedure for Unofficial and Official Training
- 4. Daily Procedure during the Competition**
 - Schedule
 - Weighing and Gridding
 - Launch and Starting Procedures
 - Landing Procedure
5. Contest Site Boundaries
6. Airspace Requirements



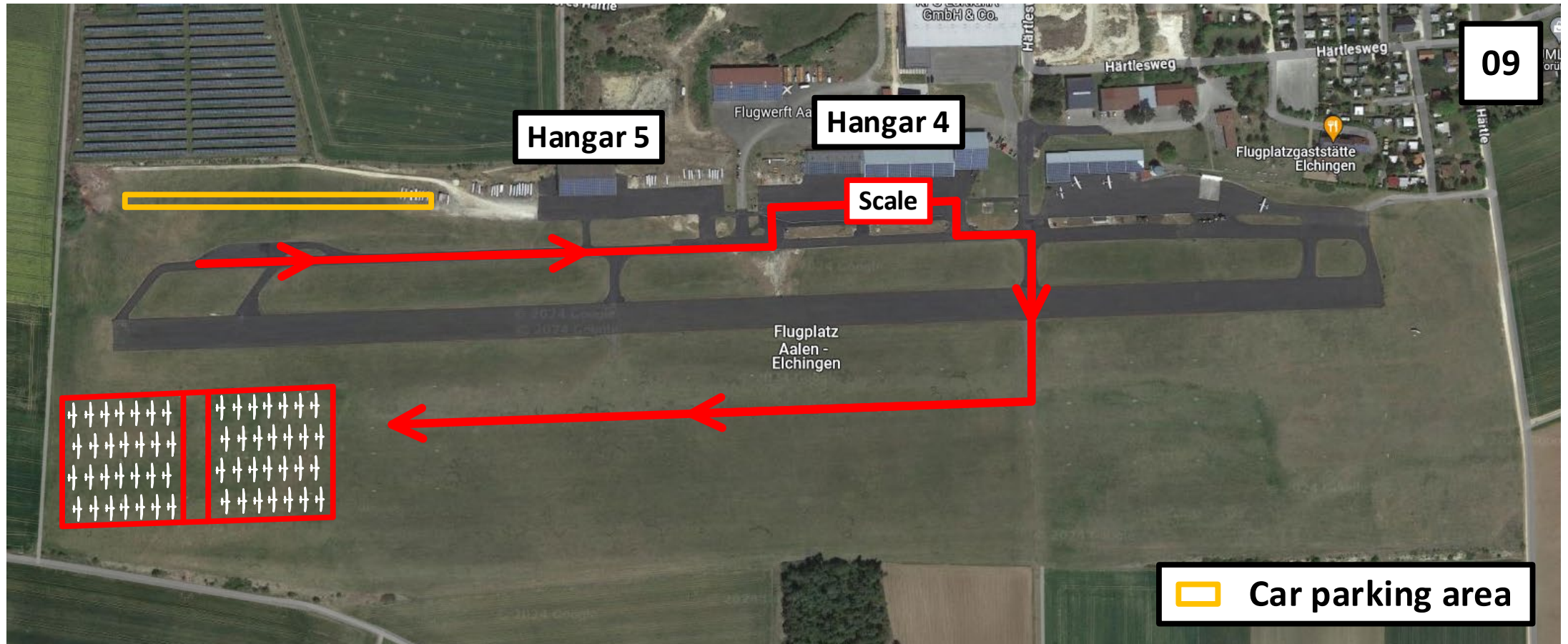
Daily schedule



- **All times mentioned in the presentation are local times (UTC + 2)**
- **Grid information:** Distributed via WhatsApp between 7:00 a.m. and 7:45 a.m.
- **Weighing:** 08.00 a.m. – 09:30 a.m.
(Any changes will be announced via WhatsApp)
- **Gridding:** Generally, 08:00 – 09:30 a.m.
(Any changes will be announced via WhatsApp)
- **Grid compression:** scheduled for 9.30 a.m.
- **Briefing:** Begins at 10:00 a.m.
(Any changes will be communicated via WhatsApp)



Monitoring 121.405 MHz is mandatory at all times to stay informed about the runway traffic. You may only cross the runway when there is no traffic inbound or outbound. WATCH OUT !



Monitoring 121.405 MHz is mandatory at all times to stay informed about the runway traffic. You may only cross the runway when there is no traffic inbound or outbound. WATCH OUT !

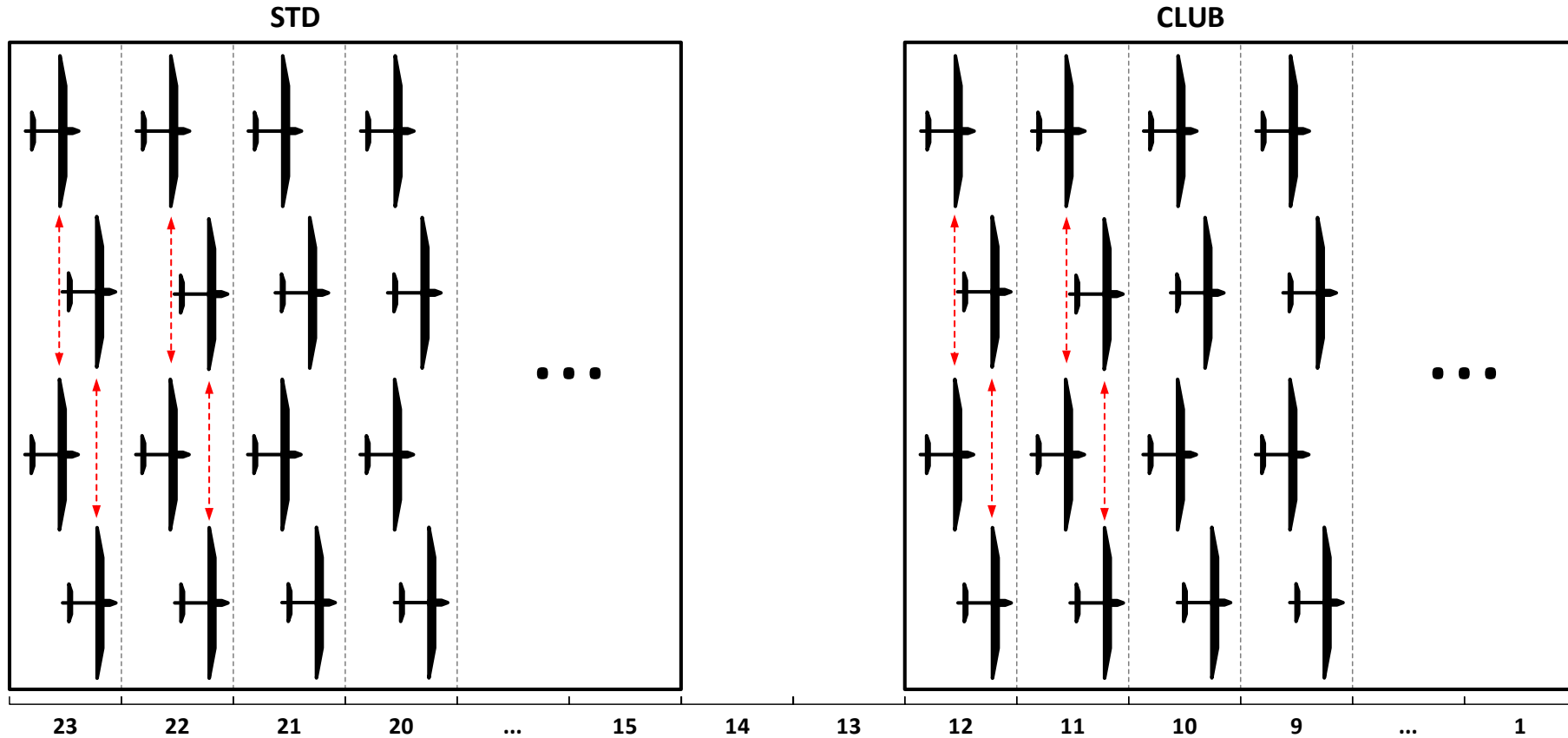


Gridding – General Procedures



- Please follow the instructions of the grid marshal.
- The grid is divided into two sections, one for each class and will be clearly marked.
- There are 4 gliders per row for both classes.
 - Specific row assignments for each day and nation will be announced via WhatsApp each morning.
 - Grid compression will take place at 9:30 a.m., to maximize the available runway length.
- A minimum distance of 25 meters has to be maintained between the two classes to provide an access lane for vehicles

Gridding – Staggered Position

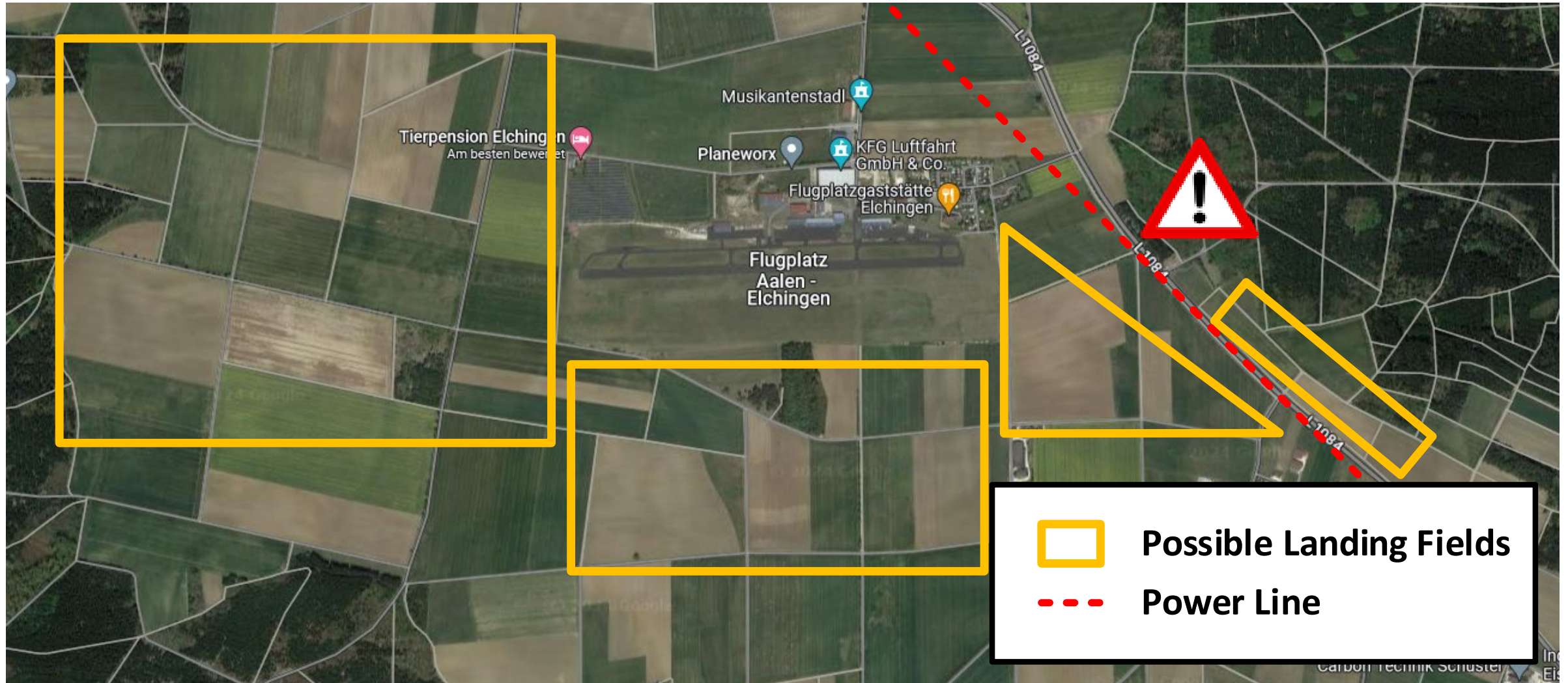


- Staggered position within a row after grid compression!
- Row 14 & 13 shall be left free.

Launch and Starting Procedures (I)

- Crossing the runway in any way during towing operations is **strictly prohibited**.
- Launching will only begin once all cars have cleared the grid.
- All gliders have to be in the grid with the tow rope hooked.
- No rope attached is considered a withdrawal from the launch - the aircraft have to be removed from the grid and placed at the rear of its class.
- All gliders will be towed up to 600m AGL into the release area.
- The towing frequency is 121.405 MHz
- Tow ropes may only be collected by the ground crews after the end of the towing operation!
- Tow ropes for all relaunch operations will be provided by the organizer.

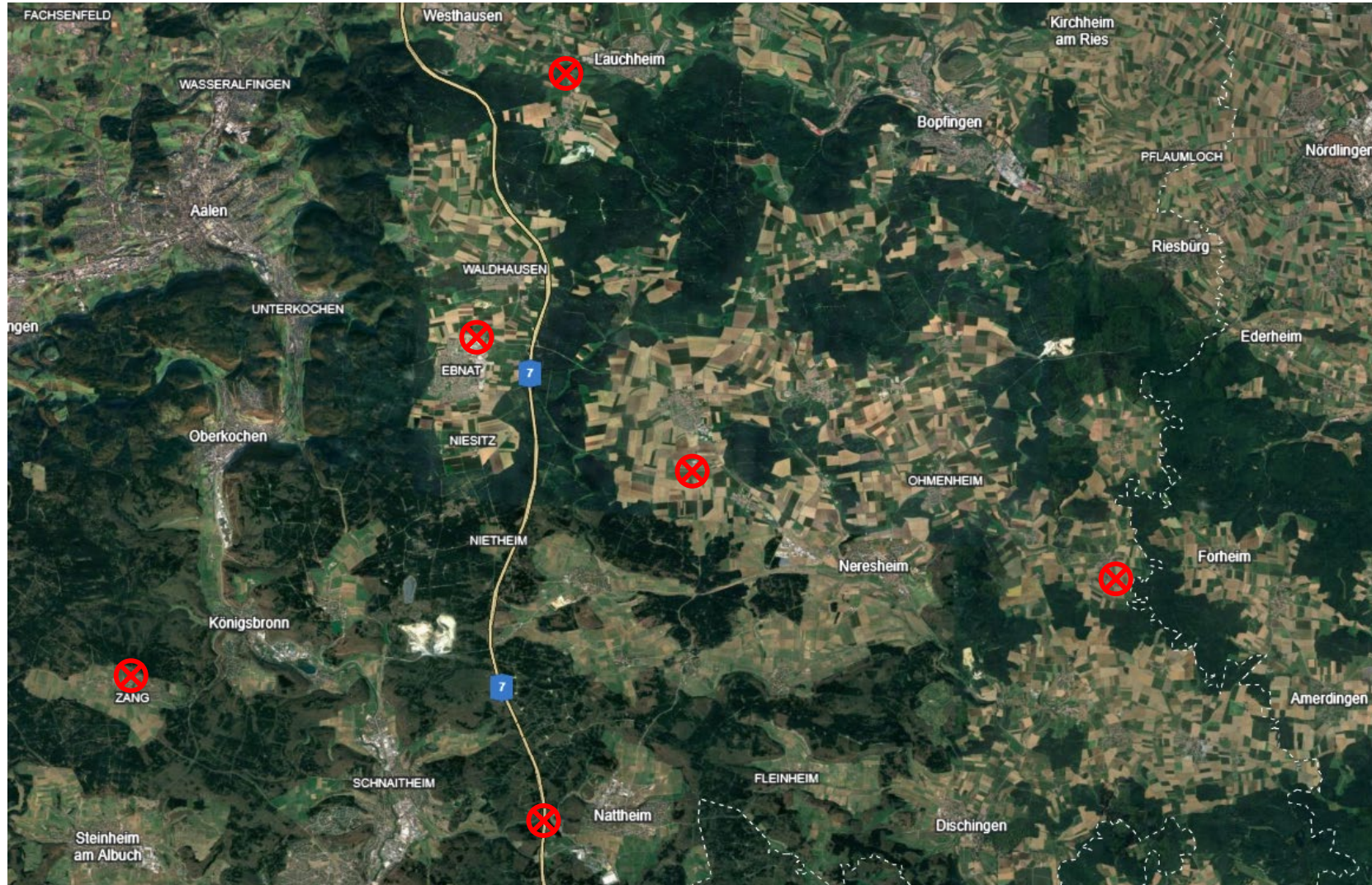
Landing Options in case of Launch Interruption



Release Areas



Designated Centerpoints for the Startline



Launch and Starting Procedures (II)

- The start line will open following the tow of the last glider in the class, as specified on the task sheet.
- A corresponding announcement will be made on the competition frequency 128.890 MHz and in the WhatsApp-Group of the TCs.
- One of the participating pilots must confirm receipt of the announcement over the radio.
- Pilots requiring a relaunch must contact the grid marshall on 121.405 MHz
 - The pilots have to land on the grass strip south of the launch runway.
 - Ground crews must clear the landed glider from the landing area as quick as possible (organizers will provide assistance)
- Tow ropes for all relaunch operations will be provided by the organizer.

Finish Ring (3,0 km)



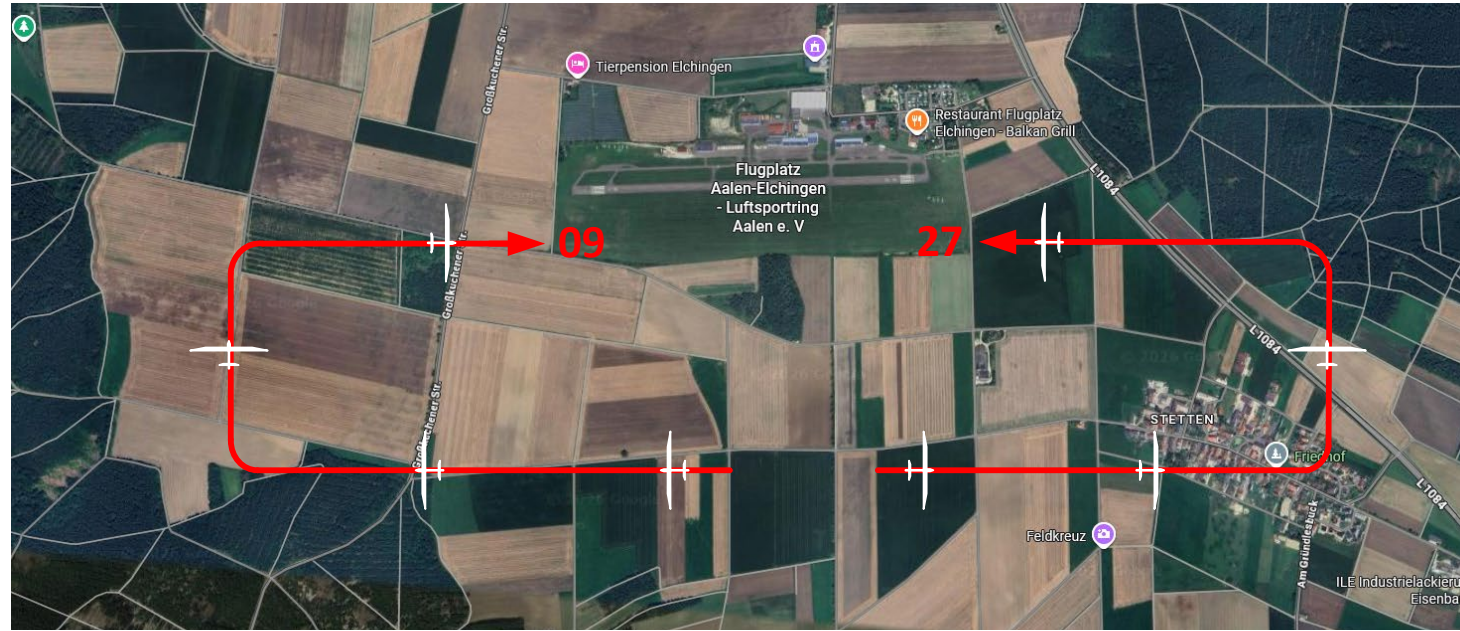


Final Approach and Landing Procedure - General -



- Contact AALEN RADIO (121.405 MHz) with your competition ID at a distance of 10 km (e.g., "Delta Seven 10 kilometers")
- After crossing the finish-ring, do not pull up. Reduce speed smoothly and go for a direct landing on the northern part of the grass runway.
- In case of too much energy make a landing pattern south of the grass runway and land at the south side of the grass runway.
- **Long landings are mandatory. Do not vacate the runway by turning left or right!**
- Landing on paved runway is permitted only with the clearance from Aalen Radio – preferred for low-altitude finals.
- All teams must ensure that the landing area is cleared quickly by moving for onwards the end of the runway.

Approach and Landing Procedure - Too much altitude -



- This pattern is mandatory for any arrival crossing the finish ring more than 200 m above the minimum required altitude.
- Please use the designated landing pattern located south of the airfield.
- **Avoid crossing with gliders being in the direct landing approach, when turning into the final! Keep your eyes open!**

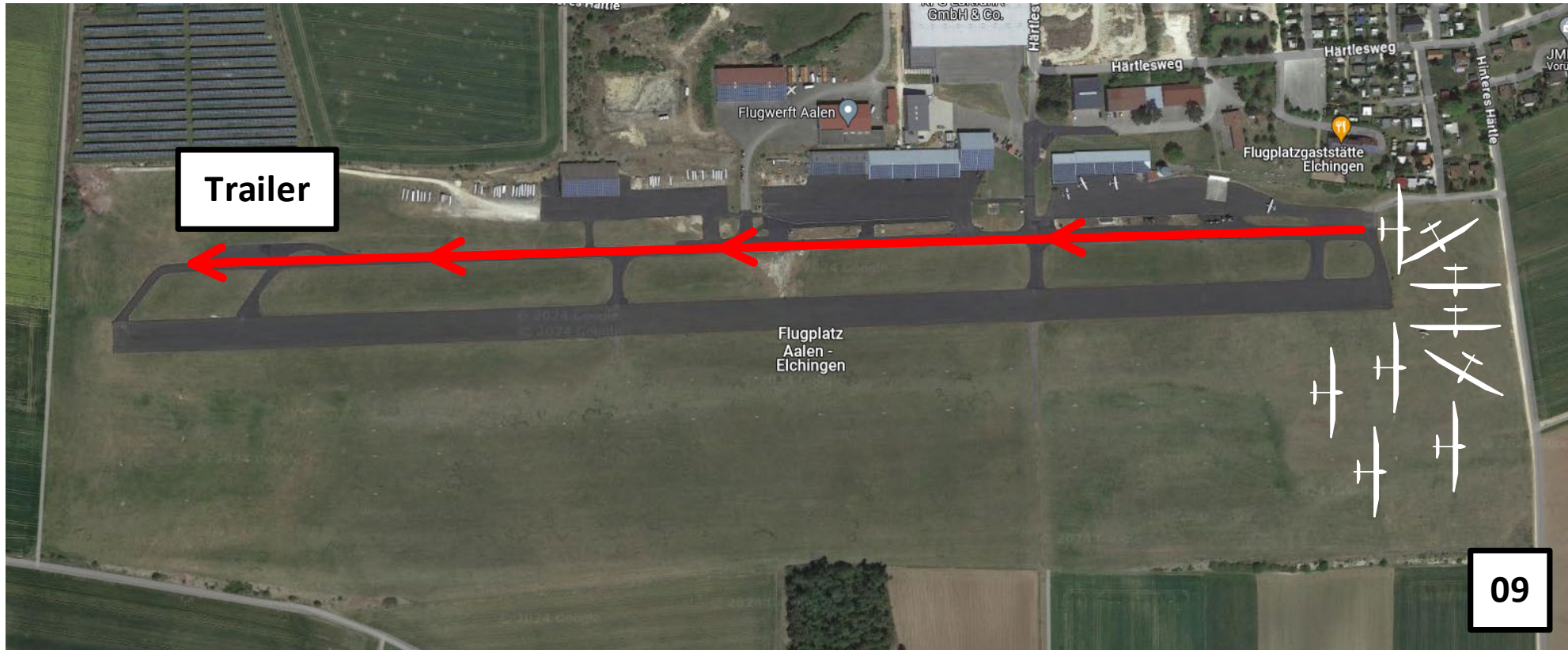
Always cross behind the paved runway!



Monitoring 121.405 MHz is mandatory at all times to stay informed about the runway traffic. You may only cross the runway when there is no traffic inbound or outbound. WATCH OUT !

Clearing the Runway – Operation Direction 09

Always cross behind the paved runway!



Monitoring 121.405 MHz is mandatory at all times to stay informed about the runway traffic. You may only cross the runway when there is no traffic inbound or outbound. WATCH OUT !



Contents



1. General Information
2. JWGC Radio Frequencies
3. Procedure for Unofficial and Official Training
4. Daily Procedure during the Competition
 - Schedule
 - Weighing and Gridding
 - Launch and Starting Procedures
 - Landing Procedure
- 5. Contest Site Boundaries**
6. Airspace Requirements

Contest Site Boundaries





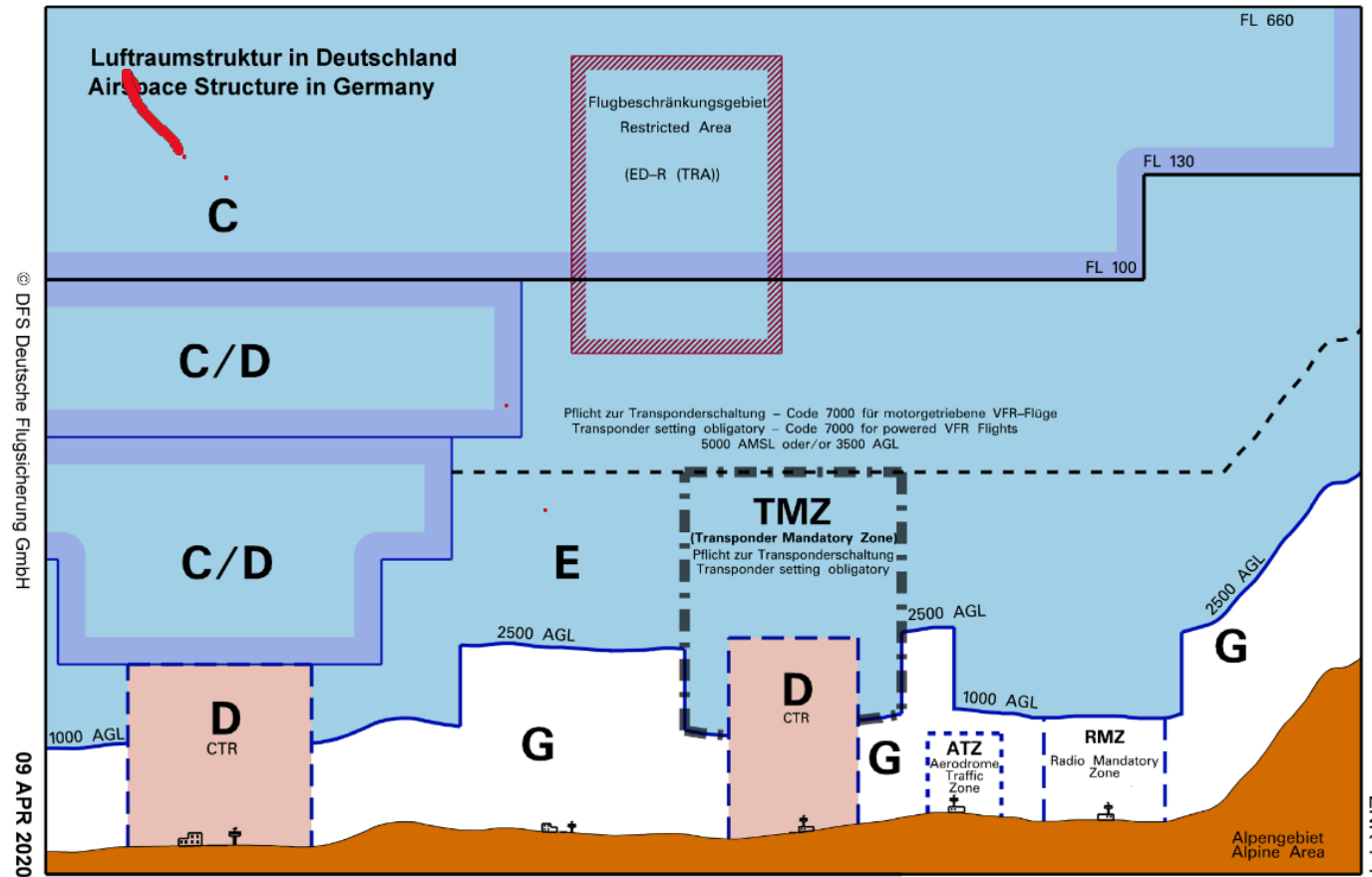
Contents



1. General Information
2. JWGC Radio Frequencies
3. Procedure for Unofficial and Official Training
4. Daily Procedure during the Competition
 - Schedule
 - Weighing and Gridding
 - Launch and Starting Procedures
 - Landing Procedure
5. Contest Site Boundaries
- 6. Airspace Requirements**

Airspace Structure Germany

competition area ends at FL 95



[See German AIP \(ENR 1\) for further information](#)



General Airspace Requirements



- All CTRs, TMZs, airspace C/D and ED-Rs are prohibited airspaces.
 - The scoring of the flight ends upon entering the airspace, after which a safe landing must be carried out. This will not be considered an airspace infringement.
- All parachute jumping zones are prohibited airspaces.
 - The scoring of the flight ends upon entering the airspace, after which a safe landing must be carried out. This will not be considered an airspace infringement.
 - Further exceptions will be noted on the task sheet!
- Current ICAO maps Stuttgart, Nuernberg, Munich and Frankfurt or the offered competition map must be carried in the glider.
- The competition area ends at FL 95.
- **The pilot remains the person responsible for his/her glider, its operation, compliance with legal regulations, and its safe operation within the airspace.**



We wish you a pleasant journey to EDPA.
We look forward to welcome you to our airfield and sharing a wonderful time together at the 14th FAI Junior World Gliding Championship.

See you soon!
Your Organizing Team