

# Selfbriefing for Training-Camps

## **From the North and South:**

Via the highway A7 exit Aalen/Oberkochen, drive in the direction of Neresheim, after the end of Elchingen turn right at the 2nd entrance in the direction of the airfield.

## **From the West (from Stuttgart):**

Take the route B 27 to Aalen, then take the route B19 to Unterkochen, then follow the signs to the highway A7 after reaching the Aalen/Oberkochen exit (see directions from the north/south). Alternatively via the A8 or B10/B466.

## **From the East:**

Drive via Nördlingen on the route B466 to Neresheim, then follow the signs to Aalen. After the village of Stetten (approx. 1 km), turn left into the airfield.

Airfield frequency  
**„AALEN RADIO“**

Towing

121.405 MHz

---

Elevation

1916 ft/ 586 m MSL

---

## Runway

Directions

09/27

Grass: 1000 x 30 m

Dimensions

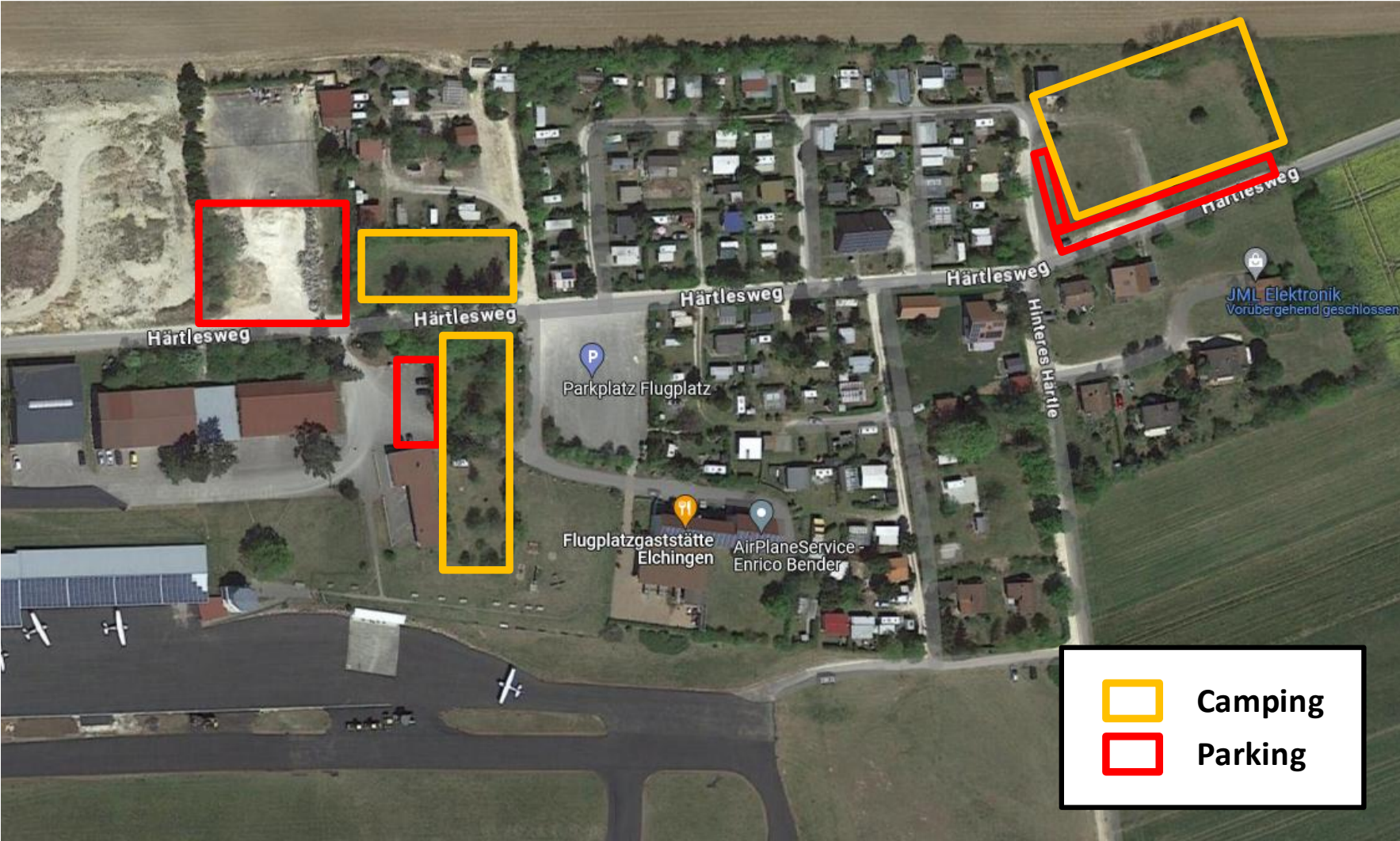
Asphalt: 1000 x 25 m, please don't use during the training, because of high traffic with powered planes.

# Airfield EDPA Aalen-Elchingen



- Registration:
  - In advance via e-mail: [edpa@lsr-aalen.de](mailto:edpa@lsr-aalen.de)
  - Type of glider, registration, competition call sign
  
- On your day of arrival:
  - Please come to the tower, otherwise no take-off is possible!
  - To enter into the airfield at the blue gate: pick-up an entrance-chip at the tower.
  - Telephone number: +49-73677122

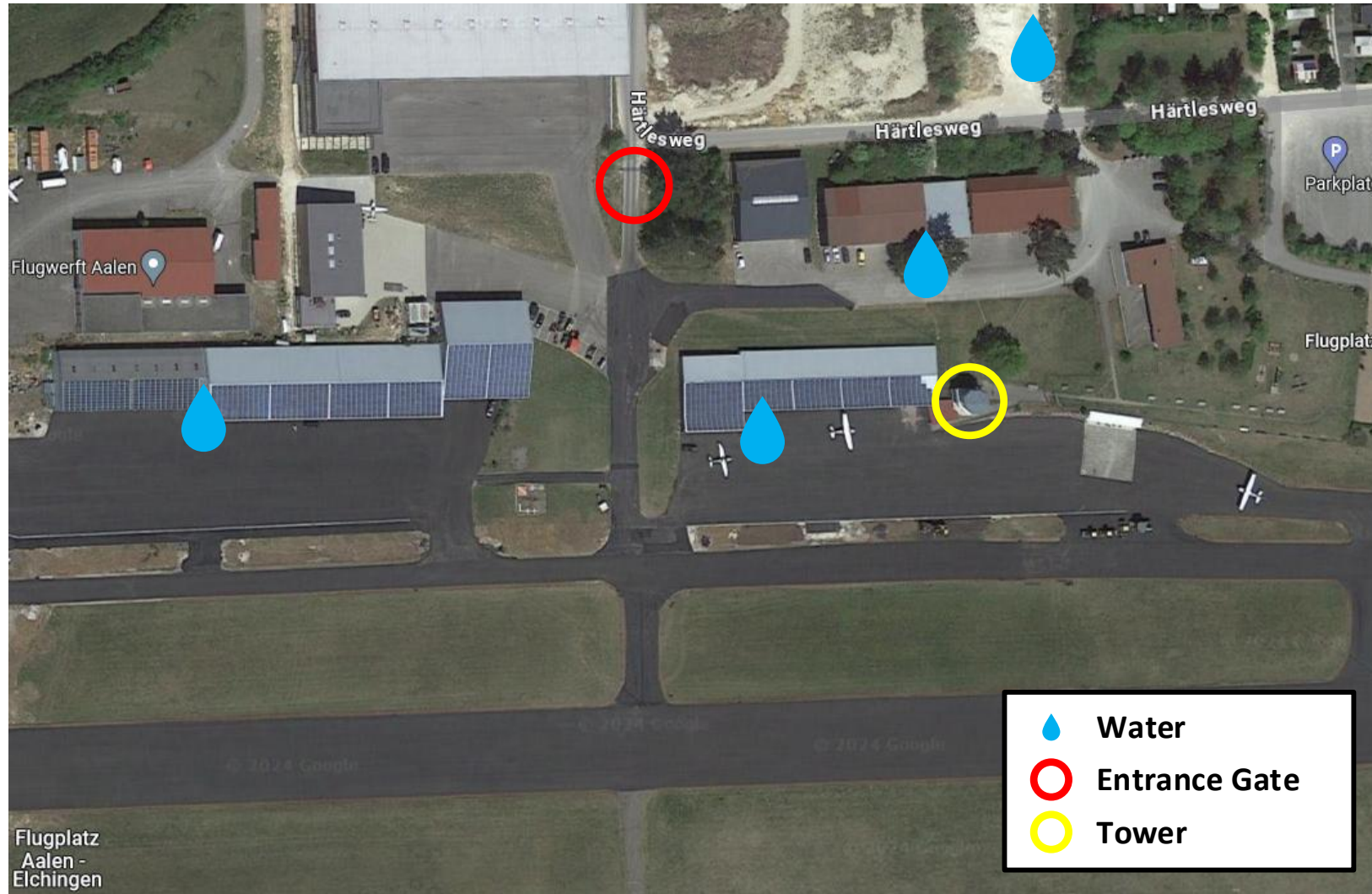
# Campsites and Parking areas



# Trailer parking area



# Tower, Entrance Gate and Water Tap Connections

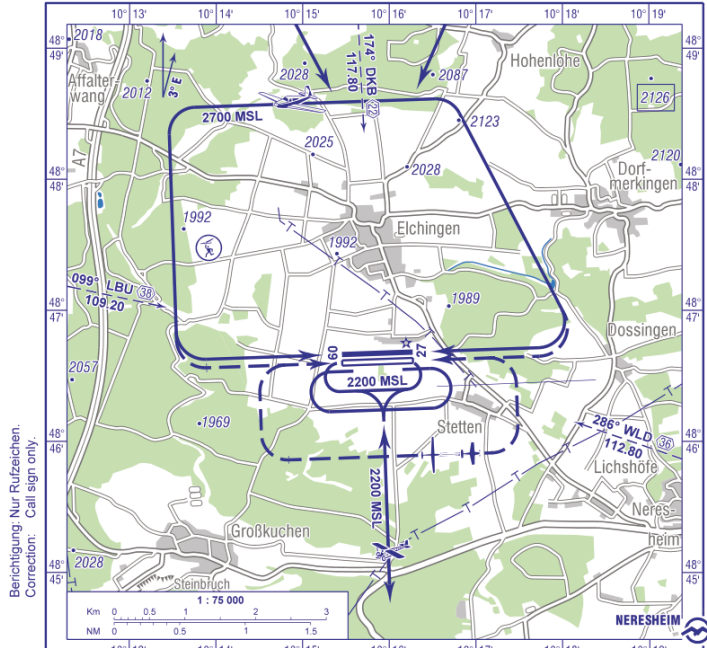




# Traffic Pattern

Sichtflugkarte  
Visual Operation Chart  
ELEV 1916 **AALEN-HEIDENHEIM/ELCHINGEN**  
EDPA

FIS AALEN RADIO  
LANGEN INFORMATION 121.405 Ge (15 NM 3000 ft GND)  
128.950



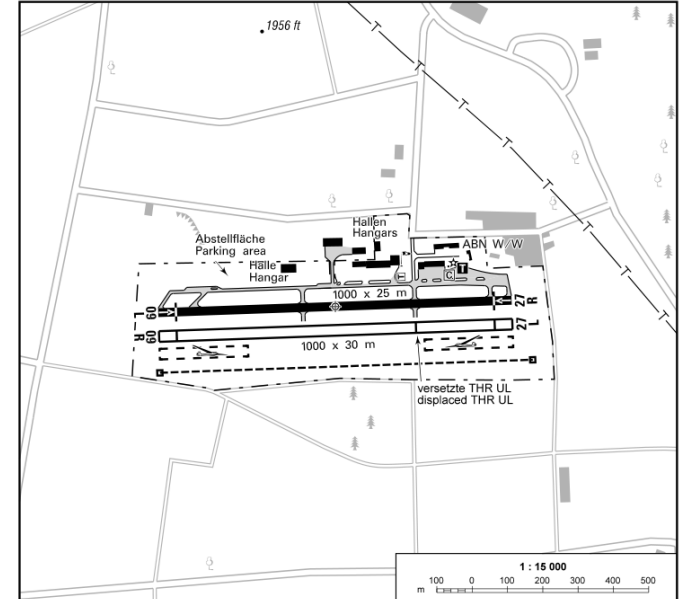
Berichtigung: Nur Rufzeichen.  
Correction: Call sign only.

Gleichzeitiger Betrieb auf der RWY 09L/27R und RWY 09R/27L ist nicht zulässig.  
UL-Platzrunde nur nutzbar, wenn kein Segelfluggetrieb.

Simultaneous operations on RWY 09L/27R and RWY 09R/27L are not permitted.  
UL traffic circuit only usable, if no glider operations.

04 MAY 2023 © DFS Deutsche Flugsicherung GmbH 1

**AALEN-HEIDENHEIM/ELCHINGEN** N 48° 46,67'  
EDPA E 10° 15,88' Flugplatzkarte  
Aerodrome Chart



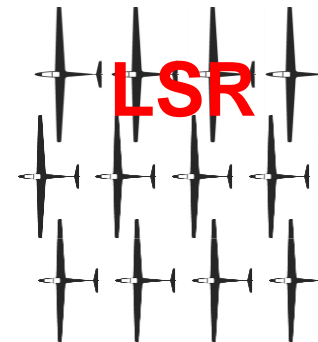
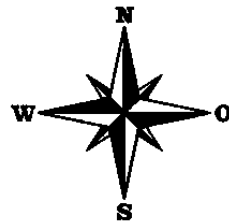
Berichtigung: OFU, Gebäude, Topografie.  
Correction: OFU, buildings, topo.

RWY (MAG)	Dimensions	Surface	Strength	TORA	LDA
09L (085) 27R (265)	1000 x 25 m	ASPH	10000 kg MPW	950 m	950 m
09R (085) 27L (265)	1000 x 30 m	Gras	2500 kg MPW	950 m	950 m
			HEL 10000 kg MPW		

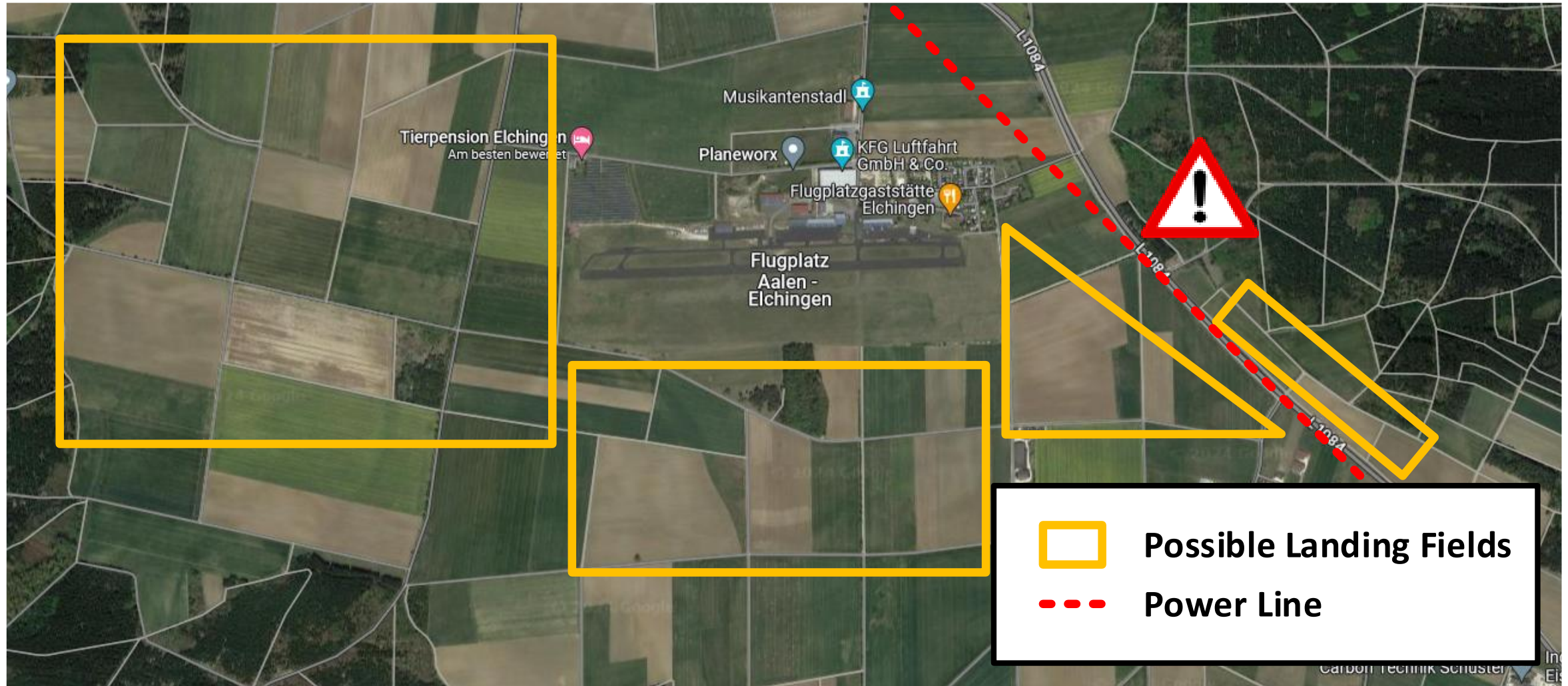
2 © DFS Deutsche Flugsicherung GmbH 27 SEP 2018

- Before Take-off, the grid must be condensed to provide a maximum towing distance!
- Towing ropes will be provided by our club.
- Before Take-off: Announcement on frequency 121.405 MHz: “Own callsign behind towing aircraft D-XXXX”

Starting grid exemplary  
for take-off direction 27

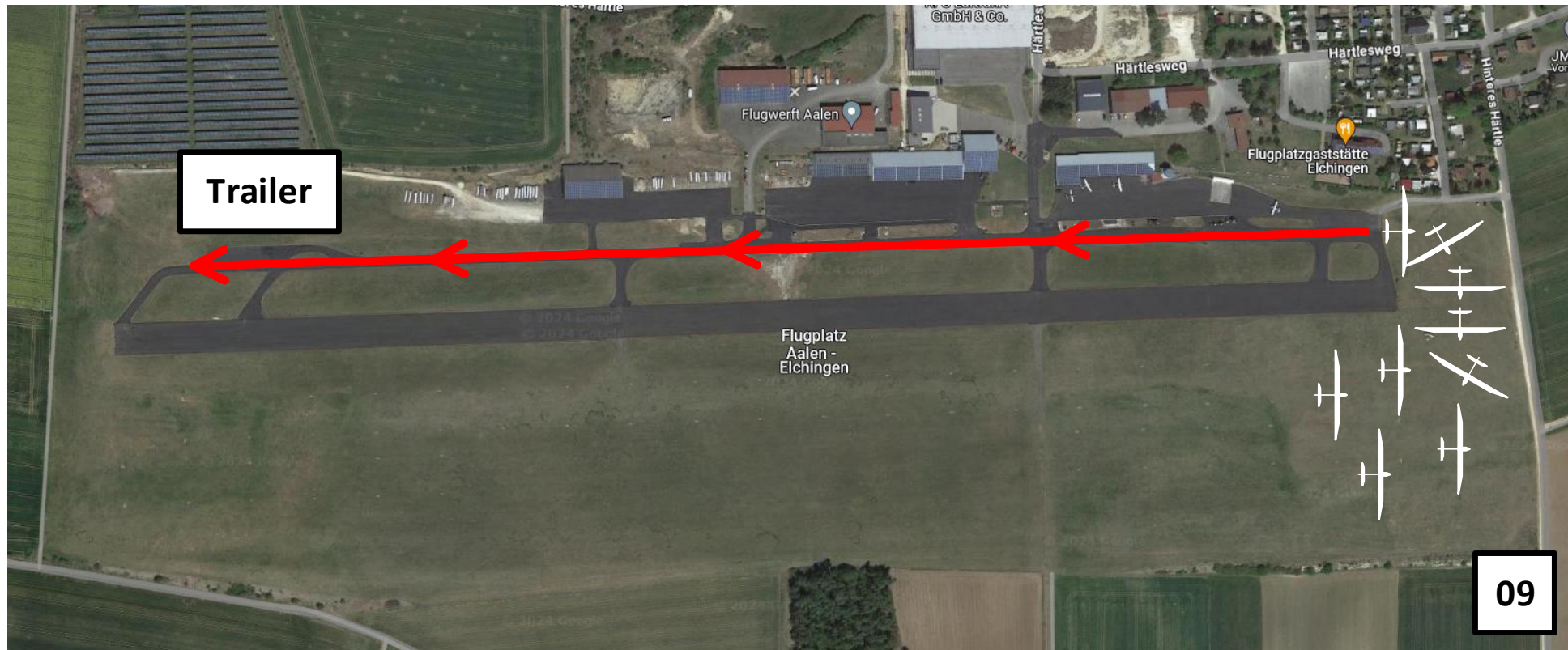


# Landing possibilities in case of take off interruptions



# Vacation of Runway 09

Always long landing, runway crossing only behind the last taxiway on grass, not on concrete. Towing back on taxiway. Monitor Aalen Radio while towing the glider. Use the same ways for gridding!



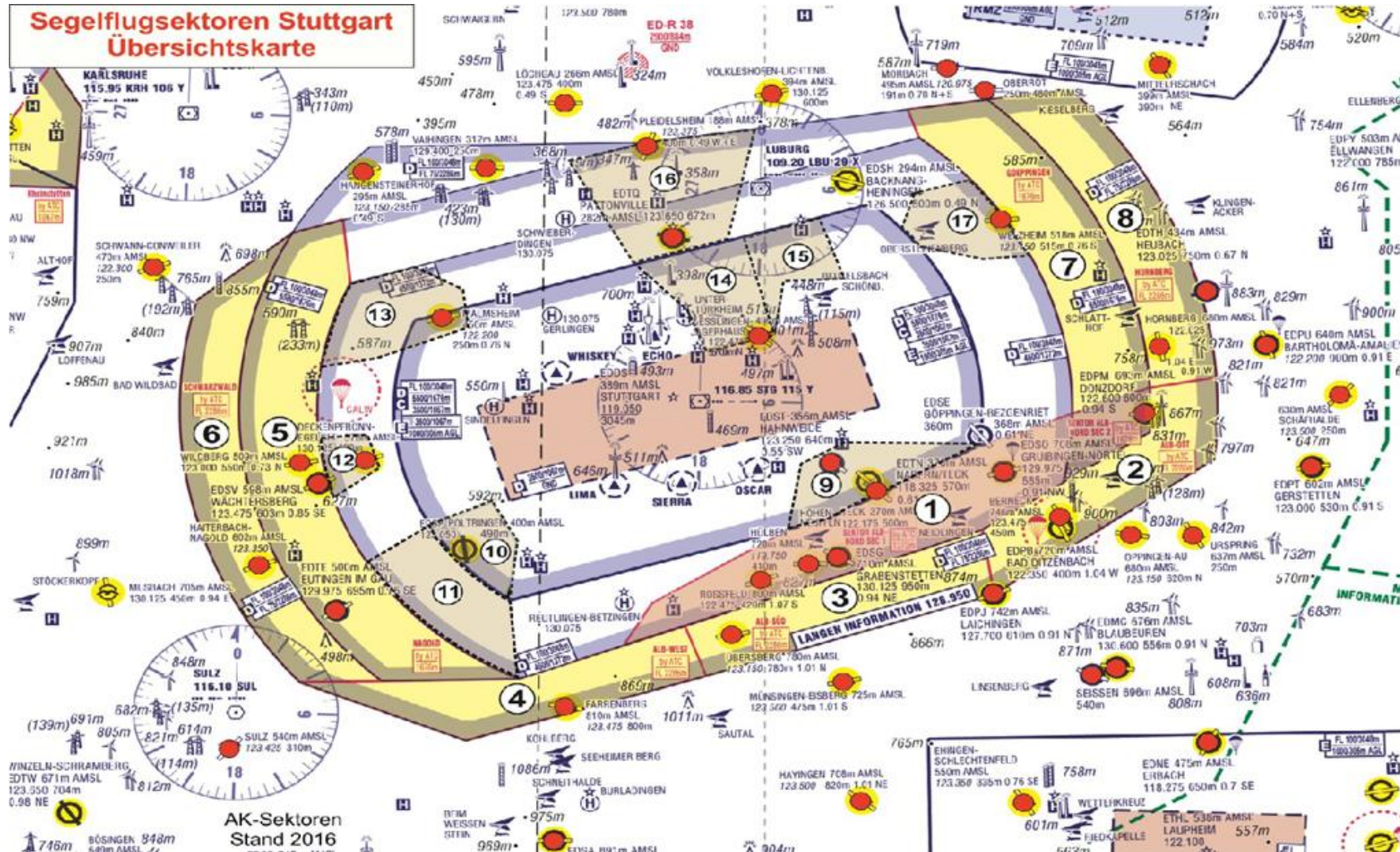
# Vacation of Runway 27

Always long landing, runway crossing only behind the last taxiway on grass, not on concrete.  
Towing back on taxiway. Monitor Aalen Radio while towing the glider. Use the same ways for gridding!





# Airspace structure around Stuttgart International Airport EDDS



We wish you a nice stay and training camp on our airfield.

Always happy landings!

**Your Organization Team JWGC 2026**



